

ITALY *Porcelain Pavers*



CANCOS
TILE & STONE



Element

DUNE · NUIT · OPAL · TAUPE

NON-STOCK / SPECIAL ORDER (6-8 WEEKS)



PAVELTA32



taupe | 32 x 32 |

PAVELTA24



taupe | 24 x 24 |

PAVELTA2448



taupe | 24 x 48 |

PAVELDU32



dune | 32 x 32 |

PAVELDU24



dune | 24 x 24 |

PAVELDU2448



dune | 24 x 48 |



PAVELNU32



nuit | 32 x 32 |

PAVELNU24



nuit | 24 x 24 |

PAVELNU2448



nuit | 24 x 48 |

PAVELOP32



opal | 32 x 32 |

PAVELOP24



opal | 24 x 24 |

PAVELOP2448



opal | 24 x 48 |

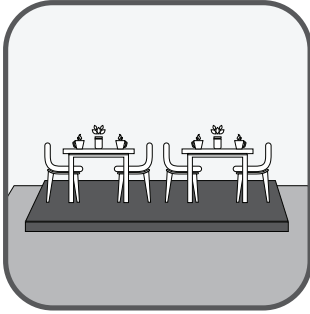
technical characteristics of 2CM PORCELAIN PAVERS

STANDARDS

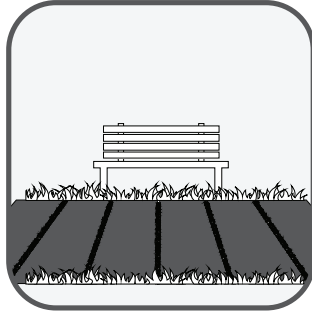


| | | | |
|--------------------------|---|---|--|
| ISO 10545-3 | Water absorption | $E < = 0,5 \%$ | 0,05 % |
| ISO 10545-9v | Thermal shock resistance | Requested | Complies with standard |
| ISO 10545-12 | Frost resistance | Requested | Complies with standard |
| ISO 10545-6 | Abrasive wear | $< 175 \text{ mm}^2$ | 139 mm^2 |
| ISO 10545-2 | Thickness | $\pm 5,0 \%$ MAX | Complies with standard |
| | Length and width | $\pm 0,6 \%$ MAX | Complies with standard |
| ISO 10545-4 | Bending strength | $S_p > / = 7,5 \text{ mm}$ $S > / = 1300 \text{ N}$ | S 10.000 N sp. 15 S 13.600 N sp. 20 |
| ISO 10545-14 | Resistance to stain | - | 5 |
| ISO 10545-13 | Chemical resistance | UB min. | UA ULA UHA |
| ISO 10545-8 | Coefficient of linear thermal-expansion | - | 60 $6,3 \times 10 \text{ c}'$ |
| ISO 10545-5 | Impact resistance | - | 0,88 |
| EN 12825 | Static load | - | Centre 9,6 Kn Centre point of sides 6,5 Kn Diagonal 8,19 Kn (CLASSE 3) |
| | Dymanic laod capacity - hand object impact test | - | Test not passed |
| | Dymanic laod capacity - soft object impact test | - | Test passed |
| EN 1339 | Bendind strength - breaking force in N | Kn 14,38 | classe 14 |
| ENV 12633 | Pendulum Test - Slip resistance | $> / = \text{CL1}$ | CL 2 |
| DIN 51130 | Slip resistance | - | R11 |
| DIN 51097 | Slip resistance | - | A + B + C min. |
| DIN 51094 | Color resistance to light | Tiles must not produce noticeable colour variation | Resistant |
| DM 236/89 B.C.R.A. | Slip resistance | - | $> 0,40$ |
| ASTM 1028-07 BOT 3000 | Slip resistance | - | $> 0,60 \text{ WET}$ $> 0,60 \text{ DRY}$ $> 0,42$ |
| EN 13501-1 | Fire resistance | - | A1 - A1 FL |

where to install
2CM PORCELAIN PAVERS



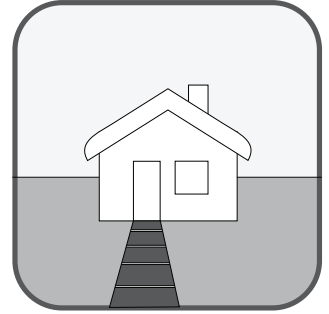
Sidewalk cafes



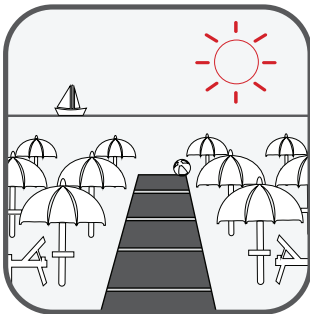
Walkways and pathways



Gardens and patios



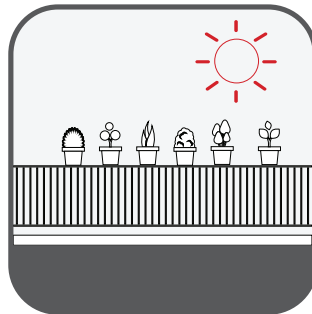
Garden paths



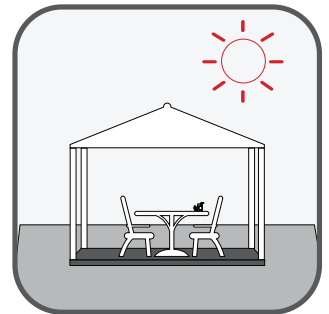
Beach resorts



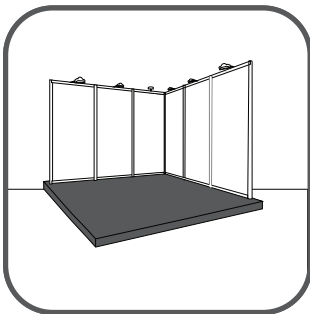
Swimming-pools



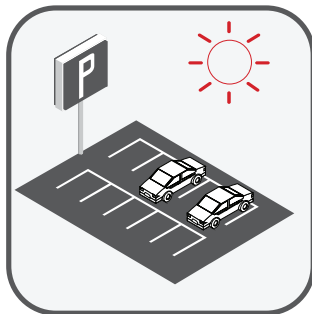
Terraces and balconies



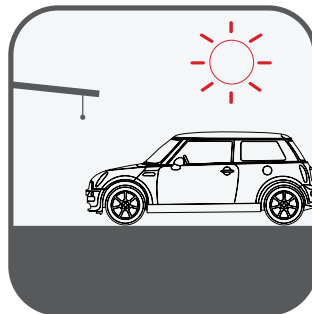
Gazebos



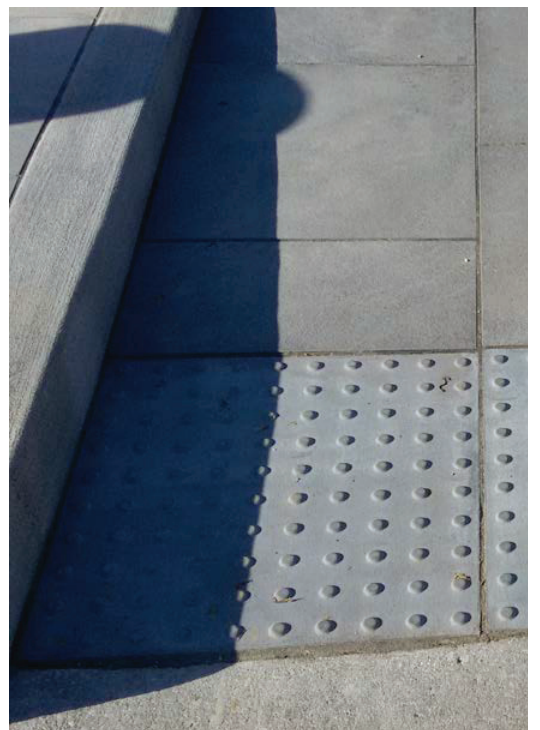
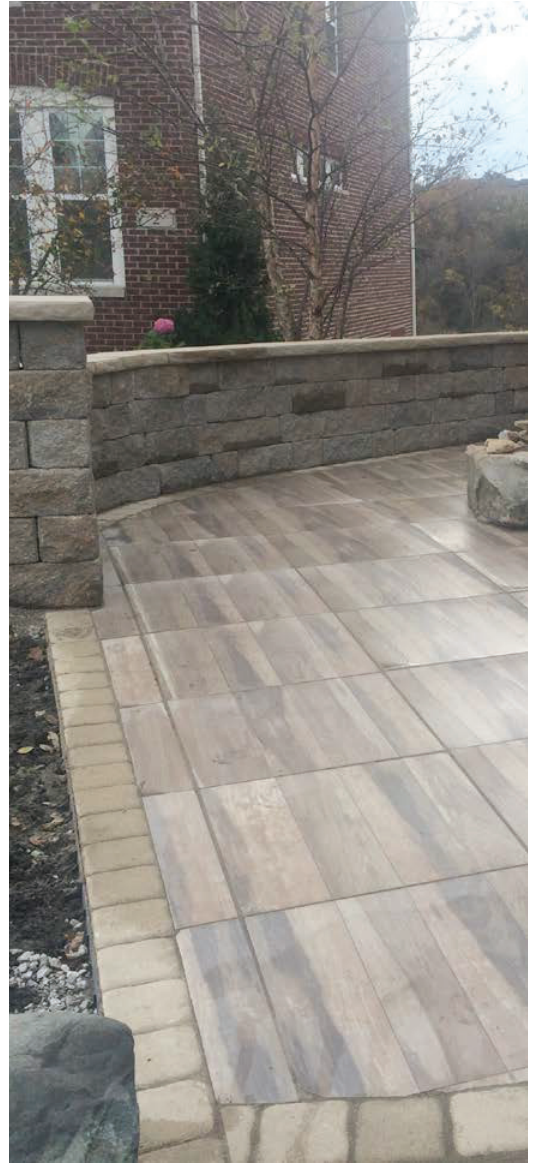
Exhibitions and events



Public parks



Public parkings



why choose 2CM PORCELAIN PAVERS?



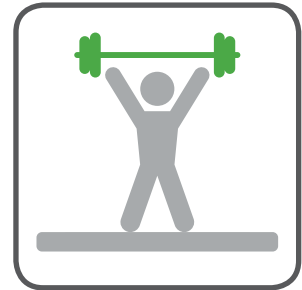
Thermal shock resistant.
(-40°F - 210°F)



Superior in fire resistance
and durability to wood tiles



Easy to clean. Stain,
chemical and salt resistant



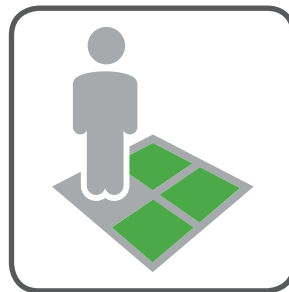
Superior in strength and
impact resistance to
ceramic tiles (supports over
2000lb), lighter and easier
to handle than concrete
blocks



Virtually no maintenance



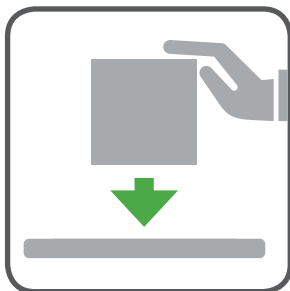
Slip resistant and quick
draining



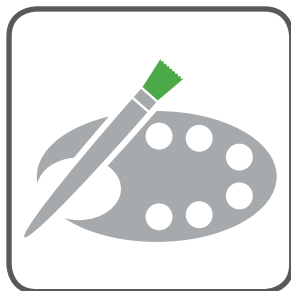
Easy to install



Removable and reusable
POPA 2.0 is ideal both for
temporary flooring and for
permanent flooring



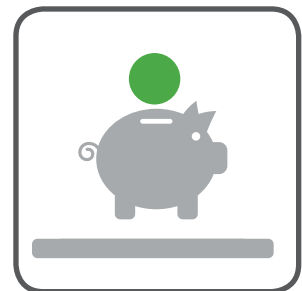
Versatile installation.
Various installation methods
including pedestal set,
gravel and grass set.
They offer endless
opportunities for landscape
design creativity in both
domestic and commercial
applications.



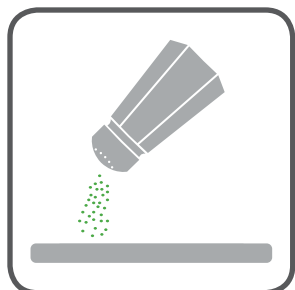
Fade resistant



Available in a broad range
of colors/styles



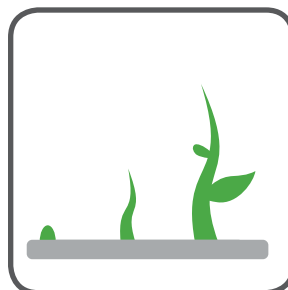
Massive over life cost
savings more cost effective
than grating or grid
structures for elevated
paving installations



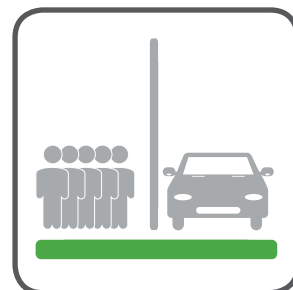
Resistant to salt corrosion.



Resistant to attack from mould, moss and verdigris treatments.



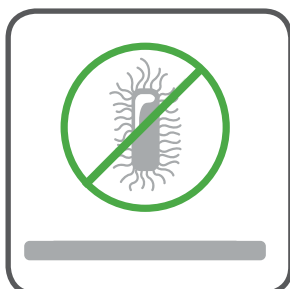
Resistant to efflorescence and other marks.



Durable: resistant to heavy vehicle and pedestrian traffic.



Frost-proof.



Hypoallergenic. No VOC.



Easy to sterilize.



Eco-friendly maintenance.



Easy to clean.



Recyclable and ecological.



New solution in extra-thick porcelain stoneware for outdoor trilling. 2 cm thick, colored fine porcelain stoneware slabs obtained from atomizing high-class clays, quartzes and metal oxides pressed at 400 kg/cm², completely sintered at a temperature of 1200°C and then squared using a system of abrasive grinders.



**The marketing name for this product is property of Cancos Tile Corp.
This same product may be marketed under different names.**